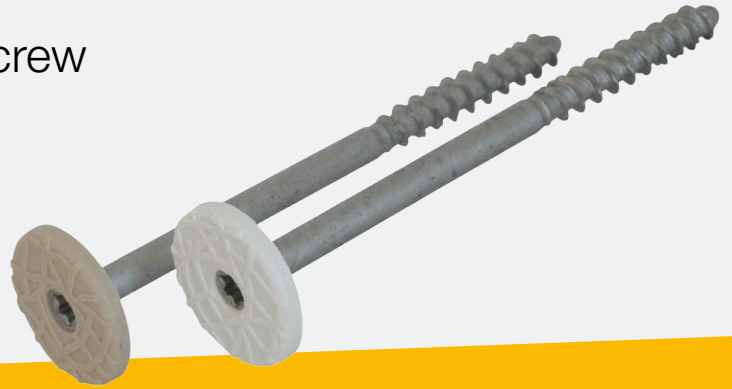


Heraklith® | DDS *plus* Concrete Screw



Heraklith® | DDS *plus* concrete screw is specifically suited for mounting wood wool cement panels. The concrete screw is made of steel with a special corrosion class C3 duplex surface treatment. Comprehensive international fire testing has shown that combining DDS *plus* screws with the Heraklith Tektalan A2 or the A2 Decorative panel results in excellent performance in fire-resistant applications. The screw head is depressed evenly, allowing the plastic head of the DDS *plus* screw to perfectly connect to the wood wool structure.

Advantages

- Plastic screw head with wood fibre structure for decorative finish
- Simple installation: pre-drill and screw in.
- Minimal anchorage depth
- Can be used for fire-resistant applications
- Can be used in cracked and uncracked concrete
- The special duplex surface treatment offers a safe solution
- Available in natural colour and white (other colours upon request)

Application range

Suitable for mounting wood wool cement boards to concrete ceilings and walls for internal and external use (no direct weathering), for example: parking garages, underside of balconies, porticoes, technical areas and basements.

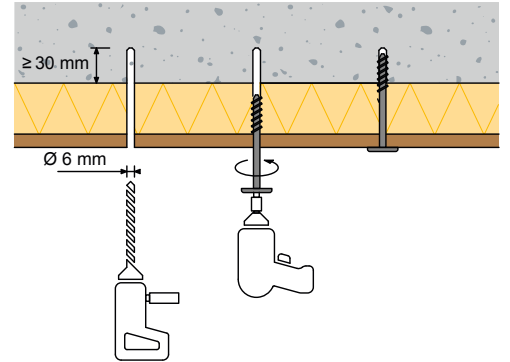
DDS *plus* concrete screws can be used in reinforced or normal concrete with minimal strength class C20/25. The required number of screws and positioning depends on the size and type of panel (see processing instructions on www.heraklith.co.uk).



DDS *plus* Concrete Screw

Technical specifications

Corrosion category	C3
Tensile strength concrete C20/25	0.5 kN
Screw diameter	7,5 mm
Head diameter	26 mm
Drilled hole diameter	6 mm
Drilled hole depth	35 mm
Anchoring depth in concrete	25 mm
Screw drive	Torx T30
Recommended anchoring material	Concrete



DDS plus screw range

Art. No. White	Art. No. Natural	Screw length (mm)	Panel thickness to (mm)	Units / pack
416810	596 858	50	25	100
416 812	416 798	75	35/50	100
416 813	416 802	85	60	100
416 814	416 803	100	75	100
596 896	596 895	110	85	100
416 815	416 804	125	100	100
416 816	416 805	150	125	100
416 817	416 806	175	150	100
416 818	416 807	200	175	100
416 819	416 808	225	200	100
416 820	416 809	250	225	100

Different colours upon request